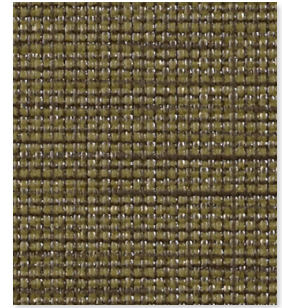
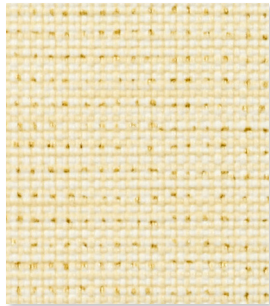


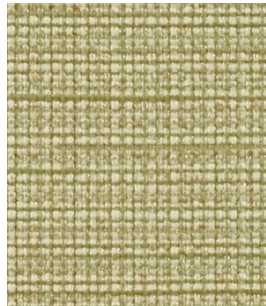
Blue Moon
540041



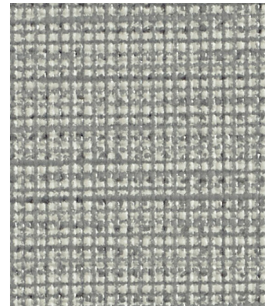
Caper
540773



Angora
540033



Prairie Green
540775



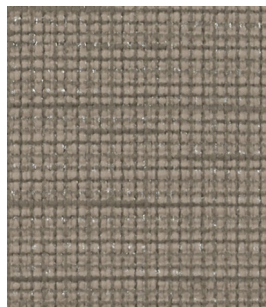
Graystone
540039



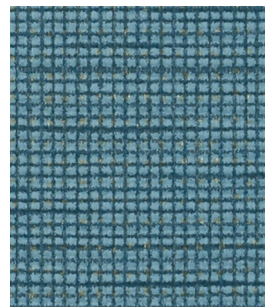
Iron
540040



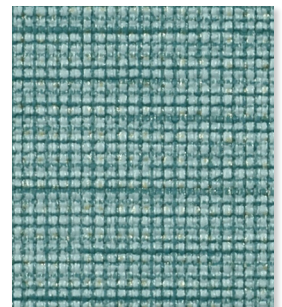
Camel
540776



Silverstone
540038



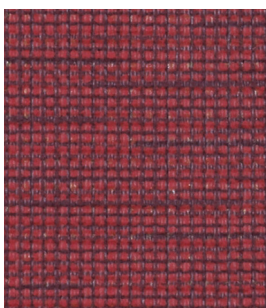
Dungaree
540034



Misty Blue
540037



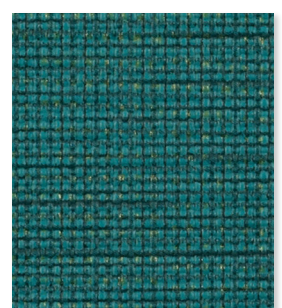
Sienna
540774



Gypsy Rose
540035



After Dark
540032



Mallard
540036



Content	100% PVC face, polyester brushed knit backing
Finish	PreFixx® protective finish for increased stain resistance and easy cleaning. Bleach cleanable and may be disinfected with a variety of hospital grade disinfectants without discoloring or damaging the finish. Disinfection does not replace the need for regular care and maintenance. For a list of recommended disinfectants, view the Coated Fabrics Chemical Resistance Technical Bulletin located at https://www.omnova.com/fileadmin/Resource_Center/Coated_Fabrics/Technical_Bulletins/OMN-ChemRes-TB.pdf .
Weight	28 oz/lin. yd [18.7 oz/yd ²] / 849 g/lin. m [619 g/m ²]
Width	54 in [137 cm]
Performance Requirements	Meets or exceeds ACT Performance Guidelines CFFA Healthcare 201 Certified



Also meets or exceeds:

- CFFA-1a Wyzenbeek - 1.3 million double rubs (cotton duck abradant)
- Fungal resistance ASTM G-21-13
- Bacterial resistance AATCC 147-2011 & AATCC 100-2004
- Oil resistance CFFA-13
- Surface resistance AATCC-76 Antistatic
- Urine resistance AATCC-6 Colorfastness to Acids and Alkali
- Resistance to sulfide stain ASTM D 1712
- BIFMA, Class A
- California Technical Bulletin 117-2013, Section 1
- IMO Part 8 Upholstered Furniture 3.1 Smoldering Cigarette
- IMO Part 8 Upholstered Furniture 3.2 Propane Flame
- NFPA 260, Class 1
- UFAC Fabric, Class 1



Applications	Indoor/Outdoor <ul style="list-style-type: none"> • Corporate Office • Food Service • Healthcare • Hospitality and Entertainment • Marine • Recreational Vehicles • Retail
---------------------	---

Though our upholsteries can be used in many applications, customers are responsible for selecting an upholstery with attributes that meet the requirements of the specific end-use application – not all upholstery is suitable for all applications.

Multiple factors affect fabric durability and appearance retention, including end-user application and proper maintenance. Wyzenbeek results above 100,000 double rubs have not been shown to be a reliable indicator of increased fabric lifespan.

For additional cleaning instructions and detailed specification information, visit: www.omnova.com

