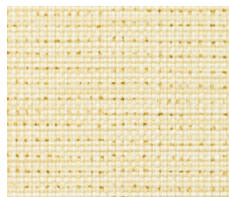


Seaport  
532979



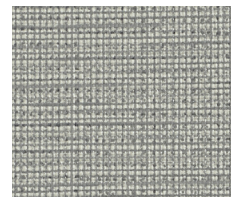
Thistle  
532978



Beach Sand  
521626



Chalk  
532971



Graystone  
532973



Blue Moon  
532975



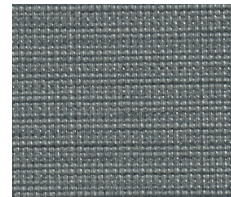
Camel  
521627



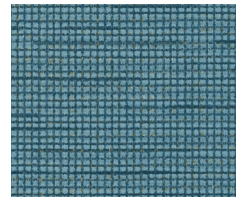
Jonquil  
521631



Prairie Green  
521634



Citadel  
532976



Dungaree  
52162



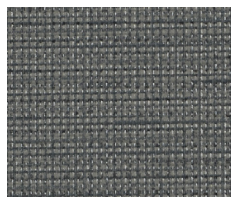
Sienna  
532635



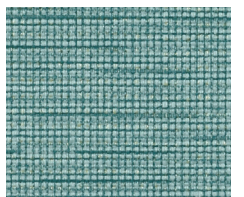
Angora  
532625



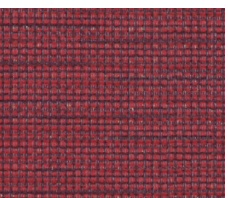
Silverstone  
521626



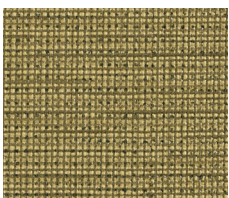
Iron  
532974



Misty Blue  
521633



Gypsy Rose  
521630



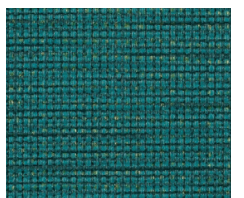
Citron  
532977



Caper  
521628



After Dark  
521624



Mallard  
521632



<b>Content</b>	100% PVC face, polyester brushed knit backing
<b>Finish</b>	<b>PreFixx</b> <sup>®</sup> protective finish for increased stain resistance and easy cleaning. Bleach cleanable and may be disinfected with a variety of hospital grade disinfectants without discoloring or damaging the finish. Disinfection does not replace the need for regular care and maintenance. For a list of recommended disinfectants, view the Coated Fabrics Chemical Resistance Technical Bulletin located at <a href="https://www.omnova.com/fileadmin/Resource_Center/Coated_Fabrics/Technical_Bulletins/OMN-ChemRes-TB.pdf">https://www.omnova.com/fileadmin/Resource_Center/Coated_Fabrics/Technical_Bulletins/OMN-ChemRes-TB.pdf</a> .
<b>Weight</b>	28 oz/lin. yd [18.7 oz/yd <sup>2</sup> ] / 849 g/lin. m [619 g/m <sup>2</sup> ]
<b>Width</b>	54 in [137 cm]
<b>Performance Requirements</b>	Meets or exceeds ACT Performance Guidelines   CFFA Healthcare 201 Certified



Also meets or exceeds:

- CFFA-1a Wyzenbeek - 1.3 million double rubs (cotton duck abradant)
- Fungal resistance ASTM G-21-13
- Bacterial resistance AATCC 147-2011 & AATCC 100-2004
- Oil resistance CFFA-13
- Surface resistance AATCC-76 Antistatic
- Urine resistance AATCC-6 Colorfastness to Acids and Alkali
- Resistance to sulfide stain ASTM D 1712
- BIFMA, Class A
- California Technical Bulletin 117-2013, Section 1
- IMO Part 8 Upholstered Furniture 3.1 Smoldering Cigarette
- IMO Part 8 Upholstered Furniture 3.2 Propane Flame
- NFPA 260, Class 1
- UFAC Fabric, Class 1



<b>Applications</b>	Indoor/Outdoor • Corporate Office • Food Service • Healthcare • Hospitality and Entertainment • Marine • Recreational Vehicles • Retail
---------------------	---

*Though our upholsteries can be used in many applications, customers are responsible for selecting an upholstery with attributes that meet the requirements of the specific end-use application – not all upholstery is suitable for all applications.*

*Multiple factors affect fabric durability and appearance retention, including end-user application and proper maintenance. Wyzenbeek results above 100,000 double rubs have not been shown to be a reliable indicator of increased fabric lifespan.*

For additional cleaning instructions and detailed specification information, visit: [www.omnova.com](http://www.omnova.com)

